

# BTEC Level 3 Health and social care

**As we lose ourselves in the service of others, we discover our own lives and our own happiness.**



**Welcome to health and social care. The subject itself allows for a journey into the value of services that are integral to society. It will equip you with the skills, qualities and insight needed to become a better person. One who can actively make a difference and contribute in a very positive way.**

**The tasks given will allow you to formulate a foundation of knowledge and awareness needed to be successful at level 3 study.**

**I am available via email [c.dawson@ll.coastandvale.academy](mailto:c.dawson@ll.coastandvale.academy) if you have any questions and/or need support.**

**I look forward to seeing you in September.**

**Mr Dawson**

	<b>Completion date:</b> Sept 2023	<b>Total hours to complete: 5</b> hrs	
<b>Learning objective:</b>		To develop an understanding of BTEC Level 3 Health and Social Care	
<b>Planned learning outcomes:</b>		By the end of the project you will have learned key terminology and a greater knowledge of aspects of this two year course.	
<b>Tasks:</b>		<p>This project is an introduction into the BTEC Level 3 Health and Social Care course. The project is made up of 3 tasks.</p> <p><b>Task 1:</b> Find the definition of keywords and give examples.</p> <p><b>Task 2:</b> Watch some of the recommended programmes/documentaries and read a book related to HSC</p> <p><b>Task 3:</b> Using the knowledge you have gained from task 2, answer this essay question 'Discuss the way Health and Social Care is portrayed within the media' e.g. is mental illness and its care portrayed in a negative way.</p> <p><b>YOU WILL NEED TO HAVE THIS READY TO HAND IN THE FIRST LESSON IN SEPTEMBER!</b></p>	
<b>TASK 1:</b>		<b>Keywords</b> ( <i>find the definitions of the following keywords and use examples</i> )	
<b>Keywords:</b>		You will be asked to keep a glossary of keywords. Find the definition and use these keywords in your answers.	
Adolescence		<p>An important status change following the onset of puberty during which a young person develops from a child into an adult.</p> <p>Examples of this are:</p>	
Development			
Fine motor skills			
Growth			
Milestone			
Discrimination			
Diversity			

## TASK 2:

## Recommended programmes relating to Health and Social Care

# NETFLIX

Babies	Marriage Story	Louis Theroux: Extreme Love, Dementia	Five Feet Apart
Brain on Fire	Theory of Everything	What to expect when you're expecting	Unbroken
Girl, Interrupted	Call the Midwife	13 Reasons Why	Pandemic: How to prevent an outbreak

Recommended Watching for Health and Social Care

# Beyond NETFLIX

Elizabeth is Missing	Rio & Koko: Becoming a Stepfamily	Jessy Nelson: Odd one out	Bohemian Rhapsody
Confessions of a Junior Doctor	Born to be different	Secret life of... Year Olds	Still Alice
The Children Act	The Upside	Beautiful Boy	Miss you Already

BBC iPlayer  
4 On Demand  
Amazon Prime  
DVD

# Beyond NETFLIX

Further Reading

Pig Heart Boy by Malorie Blackman	Wonder by R.J. Palacio	This is Going to Hurt by Adam Kay	When Breathe becomes Air by Paul Kalanithi
The Hate U Give by Angie Thomas	Me Before you by Jojo Moyes	The Fault in Our Stars by John Green	The Story of Baby P by Ray Jones
Savage Girls and Wild Boys by Michael Newton	The Language of Kindness by Christie Watson	I am Malala by Malala Yousafzai	The Boy Who Couldn't Stop Washing by Dr Judith Rapaport

Recommended Reading for Health and Social Care

Yes some of these are also films, if you prefer!



### TASK 3 :

### Health and Social Care in the Media

It is important to make the public realise about the issues in society that relate to health and social care. One way in which public awareness is raised about health and social care in general and issues that exist within the health and social care sector, is through the media.

Your task is to pick...

- x1 Film
- x1 Book
- x1 Documentary

You will then be asked to write an essay with the following title: 'Discuss the way Health and Social Care is portrayed within the media'

You must watch/read some of the examples on the previous page you have picked and create notes to help with your essay. Consider the following:

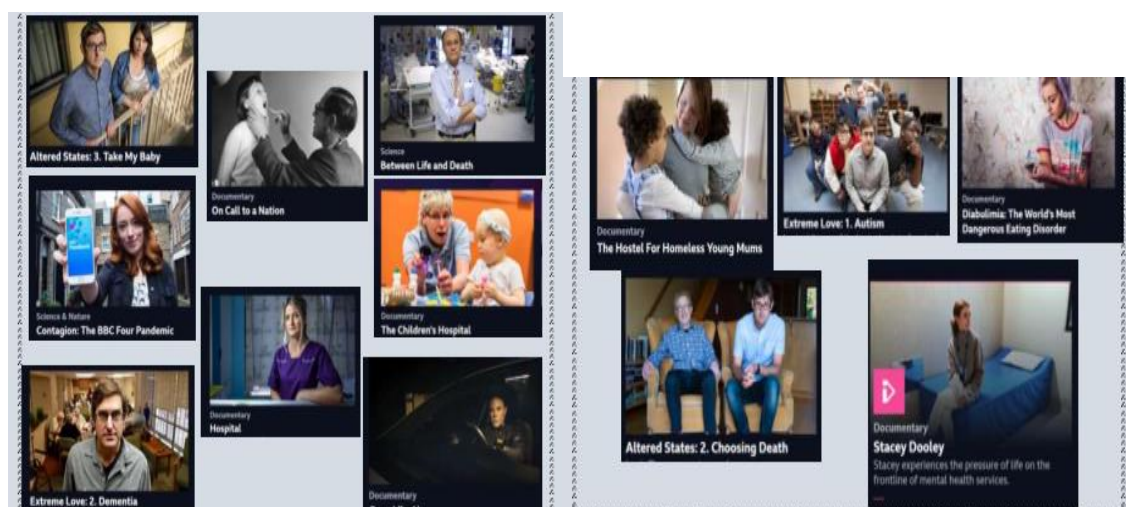
- What issues, if any, are being raised in the information you have watched/read?
- How does the programme/book/article present H&SC?

Is the programme/book/article informative/helpful and why?

- Are there any quotes/scenes etc... that stand out to you and why?
- How effective is the programme/book/article in raising public awareness about H&SC/Issues?

This list is NOT exhaustive and there may be other questions /ideas you wish to consider as you watch or read

Documentary suggestions



Links for support:

<https://www.youtube.com/watch?v=kA5o1F50BpI>

[https://www.amazon.co.uk/BTEC-National-Health-Social-Student/dp/1292126019/ref=asc\\_df\\_1292126019/?tag=googshopuk-21&linkCode=df0&hvadid=310778801271&hvpos=&hvnetw=g&hvrnd=15982073683465468227&hvpone=&hvptwo=&hvgmt=&hvdev=c&hvdvcmdl=&hvlocint=&hvlocphy=1006910&hvtargid=pla-562979290259&psc=1&th=1&psc=1](https://www.amazon.co.uk/BTEC-National-Health-Social-Student/dp/1292126019/ref=asc_df_1292126019/?tag=googshopuk-21&linkCode=df0&hvadid=310778801271&hvpos=&hvnetw=g&hvrnd=15982073683465468227&hvpone=&hvptwo=&hvgmt=&hvdev=c&hvdvcmdl=&hvlocint=&hvlocphy=1006910&hvtargid=pla-562979290259&psc=1&th=1&psc=1)

<https://www.cypnow.co.uk/features/article/social-workers-on-the-small-screen>

<https://www.communitycare.co.uk/2017/10/09/irresponsible-inaccurate-social-workers-react-eastenders-child-removal-storyline/>

### What will I be studying in Health and Social Care?

This course allows you an insight in the many roles available within health and social care, from nurses to social workers to child care assistants and beyond. They have many key features that we shall explore and apply. In year 12 you will study Unit 1 and Unit 5 you will be expected to sit an external Unit One exam and submit your Unit 5 assignment in summer 2024.

These units which will help you to gain skills that will be valuable in your chosen profession or future study. You learn about the human body and mind alongside the changes across time. You also learn what it means to work in the sector and what skills and behaviours you will need to develop.

During unit one, **Human Lifespan Development**, you focus on:

- Understanding the different influences on an individual's development and how this relates to their care needs.
- An introduction to the biological, psychological and sociological theories associated with human lifespan development.
- Exploring the physical effects of ageing and the theories that help to explain changes.
- **How you will be assessed: this is a paper based exam which lasts for 1 hour 30 minutes which is worth 90 marks. There is a variety of short- and long- answers. The questions are designed to test your knowledge on individual's development, the factors that affect this and the theories that explain this.**

During unit five, **Meeting Individual Care and Support Needs**, you focus on:

- Applying knowledge in order to provide the care and support that meets the needs of an individual in a health and social care environment, for this you need to understand the principles and practicalities that are the foundation of all the care disciplines.
- How to consider ethical issues that may arise and challenges the individual may face in order to provide personalised care.
- Reflecting on the different methods used by professionals working together in a multi-agency team to provide a package of care and support that meets individual needs.
- **How you will assessed: coursework set at school. You will need to check that your work first meets all the pass criteria before moving on to merit and then finally distinction criteria.**
-